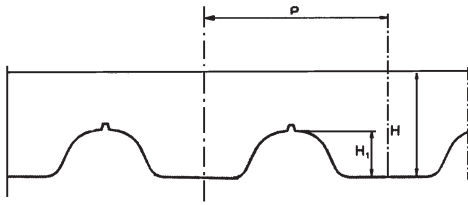


# KUGGREMMAR, METRISKA AT5-AT10

TIMING BELTS, METRIC AT5-AT10

## AT5 / AT10



### AT5

| Längd<br>Length | Antal kuggar<br>No. of teeth |
|-----------------|------------------------------|
| 225             | 45                           |
| 255             | 51                           |
| 280             | 56                           |
| 300             | 60                           |
| 330             | 66                           |
| 340             | 68                           |
| 375             | 75                           |
| 390             | 78                           |
| 420             | 84                           |
| 450             | 90                           |
| 455             | 91                           |
| 500             | 100                          |
| 545             | 109                          |
| 600             | 120                          |
| 610             | 122                          |
| 660             | 132                          |
| 710             | 142                          |
| 720             | 144                          |
| 750             | 150                          |
| 780             | 156                          |
| 825             | 165                          |
| 860             | 172                          |
| 975             | 195                          |
| 1050            | 210                          |
| 1125            | 225                          |
| 1500            | 750                          |
| 2000            | 400                          |

|                |     |
|----------------|-----|
| P              | 5.0 |
| H              | 2.7 |
| H <sub>1</sub> | 1.2 |

### AT10

| Längd<br>Length | Antal kuggar<br>No. of teeth |
|-----------------|------------------------------|
| 500             | 50                           |
| 560             | 56                           |
| 600             | 60                           |
| 610             | 61                           |
| 660             | 66                           |
| 700             | 70                           |
| 730             | 73                           |
| 780             | 78                           |
| 800             | 80                           |
| 840             | 84                           |
| 890             | 89                           |
| 920             | 92                           |
| 960             | 96                           |
| 980             | 98                           |
| 1000            | 100                          |
| 1010            | 101                          |
| 1050            | 105                          |
| 1080            | 108                          |
| 1100            | 110                          |
| 1150            | 115                          |
| 1200            | 120                          |
| 1210            | 121                          |
| 1250            | 125                          |
| 1280            | 128                          |
| 1300            | 130                          |
| 1320            | 132                          |
| 1350            | 135                          |
| 1360            | 136                          |
| 1400            | 140                          |
| 1420            | 142                          |
| 1480            | 148                          |
| 1500            | 150                          |
| 1600            | 160                          |
| 1700            | 170                          |
| 1720            | 172                          |
| 1800            | 180                          |
| 1860            | 186                          |
| 1940            | 194                          |

|                |      |
|----------------|------|
| P              | 10.0 |
| H              | 4.5  |
| H <sub>1</sub> | 2.5  |

**Material: Polyuretan med stål-kord. På förfrågan även kevlar, rostfri och polyesterkord.**

*Material: Polyurethan with steel-cord. Other cords such as kevlar, stainless and polyester on request.*

**Standardbredder**  
*Standard width*

**AT5 = 10, 16, 25 mm**

**AT10 = 16, 25, 32, 50 mm**