

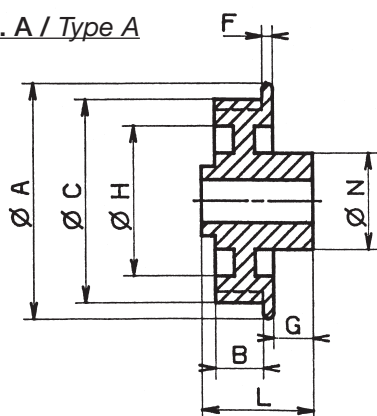
# KUGGREMSHJUL, PROFIL T FORMSPRUTADE

## TIMING BELT PULLEYS, PROFILE T PLASTIC-MOULDED

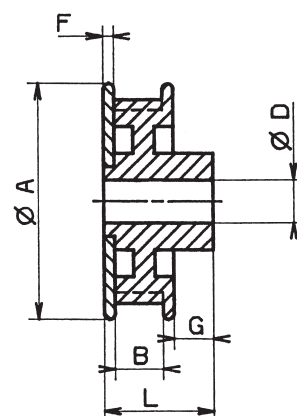
### T5

Material: Polyacetal  
 Material: Polyacetal  
 Färg: Svart  
 Colour: Black

Utf. A / Type A



Utf. B / Type B



För rembredd 6 mm / For belt width 6 mm

Best. Nr. Code	Best. Nr. Code	Tandantal No. of teeth	C	D	A	L	N	G	B	H	F
6PT5012A	6PT5012B	12	18.25	5	20.65	18	15	8	7.5	-	1.25
6PT5013A	6PT5013B	13	19.85	5	22.25	18	15	8	7.5	-	1.25
6PT5014A	6PT5014B	14	21.45	5	23.85	18	15	8	7.5	-	1.25
6PT5015A	6PT5015B	15	23.05	6	25.45	18	16	8	7.5	19	1.25
6PT5016A	6PT5016B	16	24.60	6	27.00	18	16	8	7.5	19	1.25
6PT5017A	6PT5017B	17	26.20	6	28.60	18	16	8	7.5	19	1.25
6PT5018A	6PT5018B	18	27.80	6	30.20	18	16	8	7.5	19	1.25
6PT5019A	6PT5019B	19	29.40	8	31.80	18	16	8	7.5	22	1.25
6PT5020A	6PT5020B	20	31.00	8	33.40	18	16	8	7.5	25	1.25
6PT5022A	6PT5022B	22	34.15	8	36.55	18	18	8	7.5	27	1.25
6PT5025A	6PT5025B	25	38.95	8	41.35	18	18	8	7.5	32	1.25
6PT5028A	6PT5028B	28	43.75	10	46.15	18	18	8	7.5	36	1.25
6PT5032A	6PT5032B	32	50.10	10	52.50	18	18	8	7.5	42	1.25
6PT5036A	6PT5036B	36	56.45	10	58.85	18	18	8	7.5	47	1.25
6PT5040A	6PT5040B	40	62.85	10	65.25	18	18	8	7.5	53	1.25
6PT5048A	6PT5048B	48	75.55	10	77.95	18	18	8	7.5	66	1.25
6PT5060A	6PT5060B	60	94.65	10	97.05	18	18	8	7.5	85	1.25
6PT5072A	6PT5072B	72	113.75	10	116.15	18	18	8	7.5	104	1.25
6PT5084A	6PT5084B	84	132.90	10	135.30	18	18	8	7.5	123	1.25

För rembredd 10 mm / For belt width 10 mm

Best. Nr. Code	Best. Nr. Code	Tandantal No. of teeth	C	D	A	L	N	G	B	H	F
10PT5012A	10PT5012B	12	18.25	5	20.65	25	15	8	11.5	-	1.25
10PT5013A	10PT5013B	13	19.85	5	22.25	25	15	8	11.5	-	1.25
10PT5014A	10PT5014B	14	21.45	5	23.85	25	15	8	11.5	-	1.25
10PT5015A	10PT5015B	15	23.05	6	25.45	25	16	8	11.5	19	1.25
10PT5016A	10PT5016B	16	24.60	6	27.00	25	16	8	11.5	19	1.25
10PT5017A	10PT5017B	17	26.20	6	28.60	25	16	8	11.5	19	1.25
10PT5018A	10PT5018B	18	27.80	6	30.20	25	16	8	11.5	19	1.25
10PT5019A	10PT5019B	19	29.40	8	31.80	25	16	8	11.5	22	1.25
10PT5020A	10PT5020B	20	31.00	8	33.40	25	16	8	11.5	25	1.25
10PT5022A	10PT5022B	22	34.15	8	36.55	25	18	8	11.5	27	1.25
10PT5025A	10PT5025B	25	38.95	8	41.35	25	18	8	11.5	32	1.25
10PT5028A	10PT5028B	28	43.75	10	46.15	25	18	8	11.5	36	1.25
10PT5032A	10PT5032B	32	50.10	10	52.50	25	18	8	11.5	42	1.25
10PT5036A	10PT5036B	36	56.45	10	58.85	25	18	8	11.5	47	1.25
10PT5040A	10PT5040B	40	62.85	10	65.25	25	18	8	11.5	53	1.25
10PT5048A	10PT5048B	48	75.55	10	77.95	25	18	8	11.5	66	1.25
10PT5060A	10PT5060B	60	94.65	10	97.05	25	18	8	11.5	85	1.25
10PT5072A	10PT5072B	72	113.75	10	116.15	25	18	8	11.5	104	1.25
10PT5084A	10PT5084B	84	132.90	10	135.30	25	18	8	11.5	123	1.25