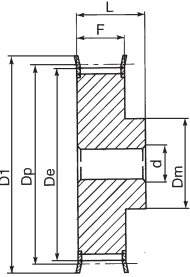


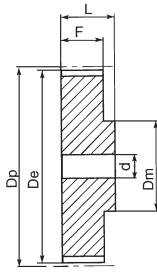
# KUGGREMSHJUL FÖRBORRADE, PROFIL MXL, XL, L, H, XH

## TIMING BELT PULLEYS STANDARD, PROFILE MXL, XL, L, H, XH

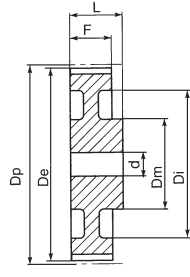
Typ/Type 6F



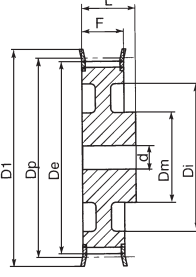
Typ/Type 6



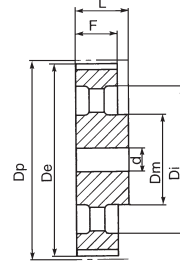
Typ/Type 6W



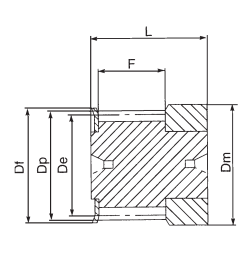
Typ/Type 6WF



Typ/Type 6A



Typ/Type MF



### MXL 025

Utförande Version	Best Nr. Code	Typ Type	Tandantal No. of teeth	Dp	De	Df	Dm	Di	F	L	d		
Material: Aluminium Materiale: Aluminium	Med Flänsar With Flanges	16MXL025FB	MF	16	10.35	9.84	15.0	15	-	8.5	16	-	
		18MXL025FB	MF	18	11.64	11.12	16.0	16	-	8.5	16	-	
		20MXL025FB	MF	20	12.94	12.43	16.0	16	-	8.5	16	-	
		22MXL025FB	6F	22	14.23	13.72	17.5	10	-	11.0	16	3	
		24MXL025FB	6F	24	15.52	15.01	20.0	10	-	11.0	16	3	
		28MXL025FB	6F	28	18.11	17.60	25.0	11	-	11.0	16	3	
		30MXL025FB	6F	30	19.40	18.90	25.0	12	-	11.0	16	4	
		32MXL025FB	6F	32	20.70	20.19	25.0	14	-	11.0	16	4	
		36MXL025FB	6F	36	23.29	22.78	28.0	16	-	11.0	16	4	
		40MXL025FB	6F	40	25.87	25.37	32.0	18	-	11.0	16	4	
		42MXL025FB	6F	42	27.17	26.67	32.0	18	-	11.0	16	5	
		44MXL025FB	6F	44	28.46	27.95	37.0	18	-	11.0	16	5	
		Utan Flänsar Without Flanges	48MXL025FB	6	48	31.05	30.54	-	20	-	11.0	16	5
			60MXL025FB	6	60	38.81	38.30	-	24	-	11.0	16	5
72MXL025FB	6		72	46.57	46.06	-	25	-	11.0	16	6		

### XL 037

Utförande Version	Best Nr. Code	Typ Type	Tandantal No. of teeth	Dp	De	Df	Dm	Di	F	L	d			
Material: Stål Materiale: Steele	Med Flänsar With Flanges	10XL037FB	6F	10	16.17	15.66	23	10	-	14.3	20	6		
		11XL037FB	6F	11	17.79	17.28	23	10	-	24.3	20	6		
		12XL037FB	6F	12	19.40	18.90	25	10	-	14.3	20	6		
		13XL037FB	6F	13	21.02	20.51	28	10	-	14.3	20	6		
		14XL037FB	6F	14	22.64	22.13	28	10	-	14.3	20	6		
		15XL037FB	6F	15	24.26	23.75	28	16	-	14.3	20	6		
		16XL037FB	6F	16	25.87	25.36	32	16	-	14.3	20	6		
		17XL037FB	6F	17	27.49	26.98	35	20	-	14.3	20	6		
		18XL037FB	6F	18	29.11	28.60	38	20	-	14.3	20	8		
		19XL037FB	6F	19	30.72	30.22	38	20	-	14.3	22	8		
		20XL037FB	6F	20	32.34	31.83	38	25	-	14.3	22	8		
		21XL037FB	6F	21	33.96	33.45	38	25	-	14.3	22	8		
		22XL037FB	6F	22	35.57	35.07	41	25	-	14.3	22	10		
		24XL037FB	6F	24	38.81	38.20	44	30	-	14.3	22	10		
		26XL037FB	6F	26	42.04	41.53	48	30	-	14.3	22	10		
		27XL037FB	6F	27	53.66	43.15	48	34	-	14.3	22	10		
		28XL037FB	6F	28	45.28	44.77	51	34	-	14.3	22	10		
		29XL037FB	6F	29	46.89	46.39	51	34	-	14.3	22	10		
		Material: Aluminium Materiale: Aluminium	Utan Flänsar Without Flanges	30XL037FB	6F	30	48.51	48.00	54	38	-	14.3	22	10
				32XL037FB	6F	32	51.74	51.24	57	38	-	14.3	25	10
34XL037FB	6			34	54.98	54.47	-	45	-	14.3	25	10		
35XL037FB	6			35	58.60	56.09	-	45	-	14.3	25	10		
36XL037FB	6			36	58.21	57.70	-	45	-	14.3	25	12		
38XL037FB	6			38	61.45	60.94	-	45	-	14.3	25	12		
39XL037FB	6			39	63.06	62.56	-	45	-	14.3	25	12		
40XL037FB	6			40	64.68	64.17	-	45	-	14.3	25	12		
41XL037FB	6			41	66.30	65.79	-	45	-	14.3	25	12		
42XL037FB	6			42	67.91	67.41	-	45	-	14.3	25	12		
43XL037FB	6			43	69.53	69.02	-	45	-	14.3	25	12		
44XL037FB	6			44	71.15	70.64	-	45	-	14.3	25	12		
45XL037FB	6W			45	72.77	72.26	-	45	61	14.3	25	12		
46XL037FB	6W			46	74.38	73.87	-	45	61	14.3	25	12		
47XL037FB	6W			47	76.00	75.49	-	45	61	14.3	25	12		
48XL037FB	6W			48	77.62	77.11	-	45	61	14.3	25	12		
49XL037FB	6W			49	79.23	78.73	-	45	61	14.3	25	12		
52XL037FB	6W			52	84.08	83.58	-	45	67	14.3	25	12		
56XL037FB	6W			56	90.55	90.04	-	45	80	14.3	25	12		
57XL037FB	6W			57	92.17	91.66	-	45	80	14.3	25	12		
58XL037FB	6W	58	93.79	93.28	-	45	80	14.3	25	12				
59XL037FB	6W	59	95.40	94.90	-	45	80	14.3	25	12				
60XL037FB	6W	60	97.02	96.51	-	45	80	14.3	25	12				
68XL037FB	6W	68	109.96	109.45	-	45	100	14.3	25	12				
69XL037FB	6W	69	111.57	111.07	-	45	100	14.3	25	12				
70XL037FB	6W	70	113.19	112.68	-	45	100	14.3	25	12				
71XL037FB	6W	71	114.81	114.30	-	45	100	14.3	25	12				
72XL037FB	6W	72	118.42	115.92	-	45	100	14.3	25	12				