

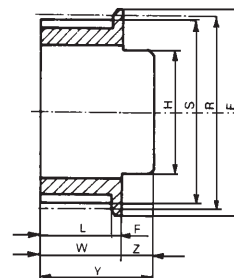
KUGGREMSHJUL FÖRBORRADE I PLAST/ALUMINIUM PROFIL XL, L

TIMING BELT PULLEYS, PLASTIC/ALUMINIUM PROFILE XL, L

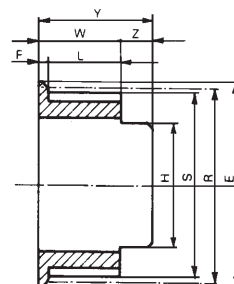
PP...XL 037

Best Nr. Code	Utförande Version	Typ Type	R	S	U	E	L	F	W	H	Y	Z
PP 11 XL 037	FM / FF	1	17.79	17.28	-	20.5	11	2.0	13.0	12.5	21	8.0
PP 12 XL 037	FM / FF	1	19.40	18.89	-	22.0	11	2.0	13.0	12.5	21	8.0
PP 14 XL 037	FM / FF	1	22.64	22.13	-	25.5	11	2.0	13.0	16.0	21	8.0
PP 15 XL 037	FM / FF	1	24.25	23.74	-	27.0	11	2.0	13.0	18.0	25	12.0
PP 16 XL 037	FM / FF	1	25.87	25.36	-	28.5	11	2.0	13.0	18.0	25	12.0
PP 18 XL 037	FM / FF	1	29.11	28.60	-	32.0	11	2.0	13.0	20.0	25	12.0
PP 20 XL 037	FM / FF	1	32.34	31.83	-	35.0	11	2.0	13.0	20.0	25	12.0
PP 21 XL 037	FM / FF	1	33.96	33.45	-	36.5	11	2.0	13.0	20.0	25	12.0
PP 22 XL 037	FM / FF	1	35.57	35.06	-	38.5	11	2.0	13.0	20.0	25	12.0
PP 24 XL 037	FM / FF	1	38.81	38.30	-	41.5	11	2.5	13.5	25.0	25	11.5
PP 28 XL 037	FM / FF	1	45.28	44.77	-	48.0	11	2.5	13.5	25.0	25	11.5
PP 30 XL 037	FM / FF	2	48.51	48.00	40	51.0	11	2.5	13.5	25.0	25	11.5
PP 32 XL 037	FM / FF	2	51.74	51.23	42	54.5	11	2.5	13.5	25.0	25	11.5
PP 36 XL 037	FM / FF	2	58.21	57.70	49	61.0	11	2.5	13.5	35.0	25	11.5
PP 40 XL 037	FM / FF	2	64.68	64.17	54	67.5	11	2.5	13.5	35.0	25	11.5
PP 42 XL 037	FM / FF	2	67.91	67.40	57	70.5	11	2.5	13.5	35.0	25	11.5
PP 44 XL 037	FM / FF	2	71.15	70.64	60	74.0	11	2.5	13.5	35.0	25	11.5
PP 48 XL 037	FM / FF	2	77.62	77.11	68	80.5	11	2.5	13.5	35.0	25	11.5
PP 50 XL 037	FM / FF	2	80.85	80.34	71	83.0	11	2.5	13.5	35.0	25	11.5

Typ 1 / Type 1
Utf. FM / Version FM



Typ 1 / Type 1
Utf. FF / Version FF

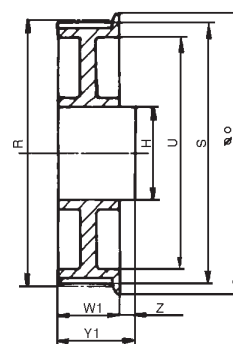


Nav i aluminium
Hub in Aluminium

PP...L 050

Best Nr. Code	Utförande Version	Typ Type	R	S	U	E	L	F	W	H	Y	Z
PP 10 L 050	FM / FF	1	30.32	29.56	-	34.0	14.5	2	16.5	20	25	8.5
PP 12 L 050	FM / FF	1	36.38	35.62	-	40.0	14.5	2	16.5	25	25	8.5
PP 14 L 050	FM / FF	1	42.45	41.69	-	46.0	14.5	2.5	17	30	30	13.0
PP 16 L 050	FM / FF	1	48.51	47.75	-	52.0	14.5	2.5	17	30	30	13.0
PP 18 L 050	FM / FF	2	54.57	53.81	43	58.0	14.5	2.5	17	30	30	13.0
PP 20 L 050	FM / FF	2	60.64	59.88	48	64.0	14.5	2.5	17	30	30	13.0
PP 22 L 050	FM / FF	2	66.70	65.94	56	70.0	14.5	2.5	17	40	30	13.0
PP 24 L 050	FM / FF	2	72.77	72.01	60	76.0	14.5	2.5	17	40	30	13.0
PP 26 L 050	FM / FF	2	78.83	78.07	65	82.5	14.5	2.5	17	40	30	13.0
PP 28 L 050	FM / FF	2	84.89	84.13	71	88.5	14.5	2.5	17	40	30	13.0
PP 30 L 050	FM / FF	2	90.96	90.20	76	94.5	14.5	2.5	17	40	30	13.0
PP 32 L 050	FM / FF	2	97.02	96.26	85	100.5	14.5	2.5	17	40	30	13.0
PP 36 L 050	FM / FF	2	109.15	108.39	94	112.5	14.5	2.5	17	50	40	23.0
PP 40 L 050	FM / FF	2	121.28	120.52	102	125.0	14.5	2.5	17	50	40	23.0

Typ 2 / Type 2
Utf. FM / Version FM

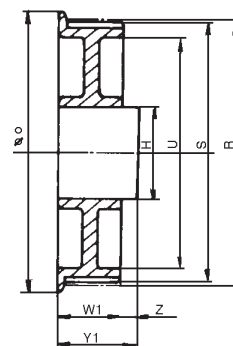


Nav i aluminium
Hub in Aluminium

PP...L 100

Best Nr. Code	Utförande Version	Typ Type	R	S	U	E	L	F	W	H	Y	Z
PP 10 L 100	FM / FF	1	30.32	29.56	-	34.0	27.5	2.0	29.5	20	40	10.5
PP 12 L 100	FM / FF	1	36.38	35.62	-	40.0	27.5	2.0	29.5	25	40	10.5
PP 14 L 100	FM / FF	1	42.45	41.69	-	46.0	27.5	2.5	30.0	30	40	10.0
PP 16 L 100	FM / FF	1	48.51	47.75	-	52.0	27.5	2.5	30.0	30	40	10.0
PP 18 L 100	FM / FF	1	54.57	53.81	-	58.0	27.5	2.5	30.0	40	50	20.0
PP 20 L 100	FM / FF	1	60.64	59.88	-	64.0	27.5	2.5	30.0	40	50	20.0
PP 22 L 100	FM / FF	2	66.70	65.94	55	70.0	27.5	2.5	30.0	40	50	20.0
PP 24 L 100	FM / FF	2	72.77	72.01	59	76.0	27.5	2.5	30.0	40	50	20.0
PP 26 L 100	FM / FF	2	78.83	78.07	64	82.5	27.5	2.5	30.0	40	50	20.0
PP 28 L 100	FM / FF	2	84.89	84.13	71	88.5	27.5	2.5	30.0	48	50	20.0
PP 30 L 100	FM / FF	2	90.96	90.20	76	94.5	27.5	2.5	30.0	48	50	20.0
PP 32 L 100	FM / FF	2	97.02	96.26	81	100.5	27.5	2.5	30.0	48	50	20.0
PP 36 L 100	FM / FF	2	109.15	108.39	92	112.5	27.5	2.5	30.0	57	50	20.0
PP 40 L 100	FM / FF	2	121.28	120.52	102	125.0	27.5	2.5	30.0	57	50	20.0

Typ 2 / Type 2
Utf. FF / Version FF



Nav i stål
Hub in steel